

FOR LEASE: 3,200 SF GROUND FLOOR RETAIL SPACES

619 N Broad St, Philadelphia, PA 19128

EQUITY CRE



PROPERTY FEATURES & DETAILS

- 3,200 SF Available
 - Space A: 2,050 SF
 - Space B: 1,150 SF
- Located below 120 new construction apartments
- Located in the emerging tri-party neighborhood (N. Broad/Loft District/Francisville) in need of retail amenities to fulfill high demand from residential densities
- Dramatic 14 ft ceiling heights
- 13' window assemblies allowing in plenty of natural light
- Vanilla box delivery
- Venting possible
- Excellent visibility with 138 ft of frontage on N Broad St
- Ideal for café, restaurant, fitness, salon, and retail uses"

LOCATION DETAILS

- Located on the corner of N Broad St & Mt. Vernon St on the exploding North Broad Corridor. Steps from the Broad St Line stations at Spring Garden St & Fairmount Ave. Easily accessible to Spring Garden St, Fairmount Ave, Callowhill St, and I-676.

CONTACT

NATHAN RHODES

nrhodes@equitycre.com

DIRECT 484.531.2076

STEVE JEFFRIES

sjeffries@equitycre.com

DIRECT 484.531.2250

WILL CICCARELLI

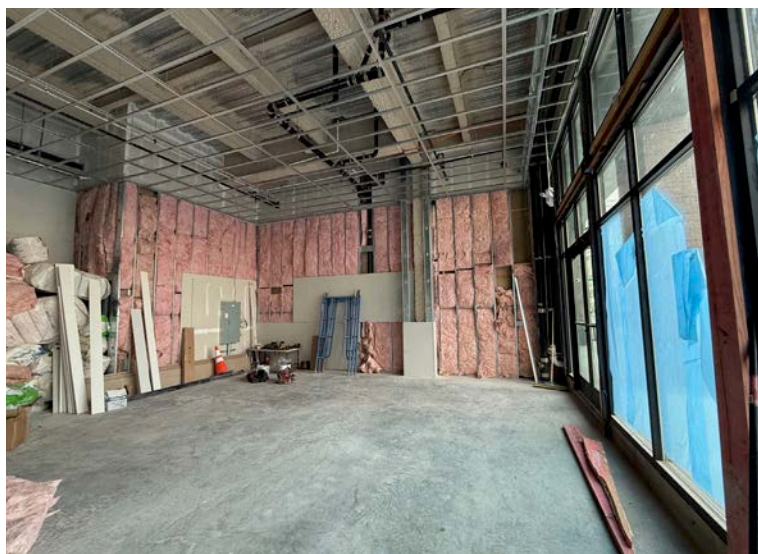
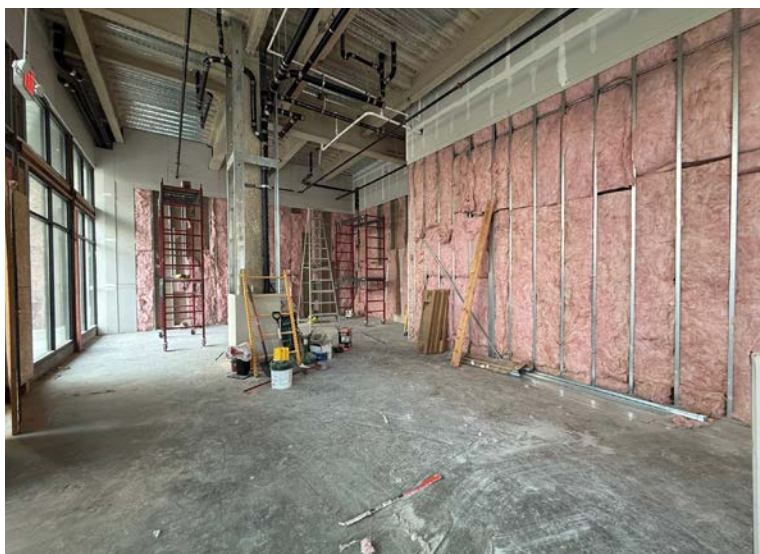
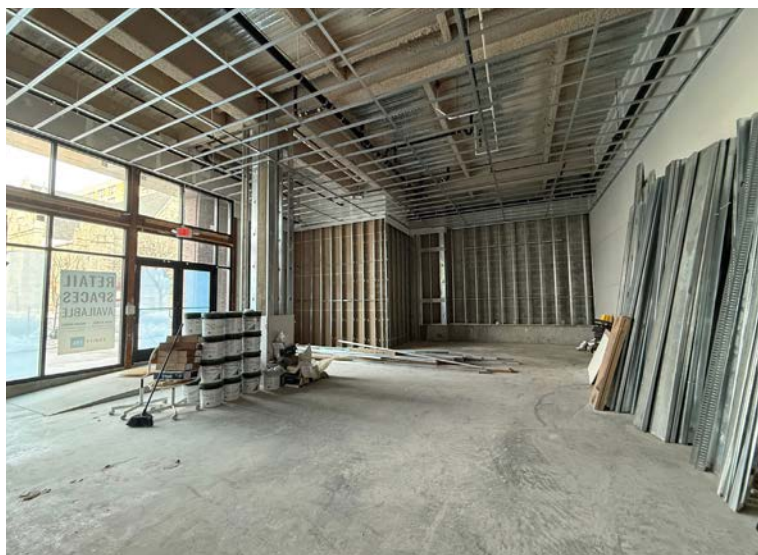
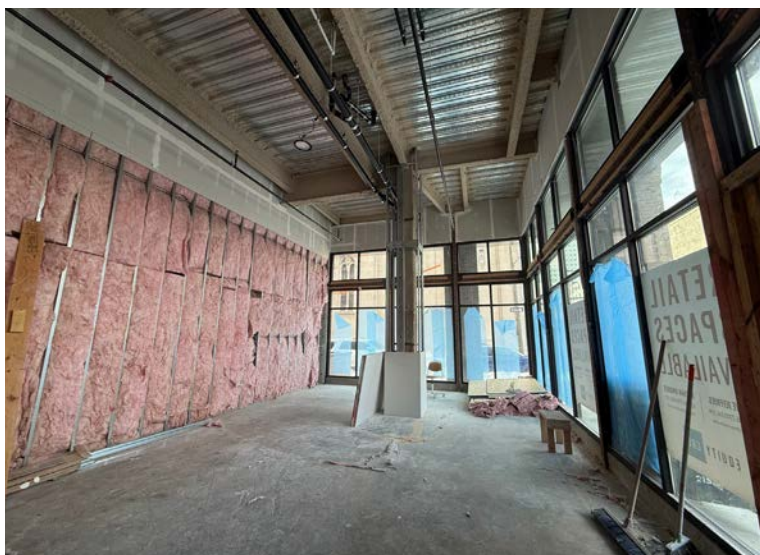
wcicarelli@equitycre.com

DIRECT 484.531.2209

FOR LEASE: 3,200 SF GROUND FLOOR RETAIL SPACES

619 N Broad St, Philadelphia, PA 19128

EQUITY CRE

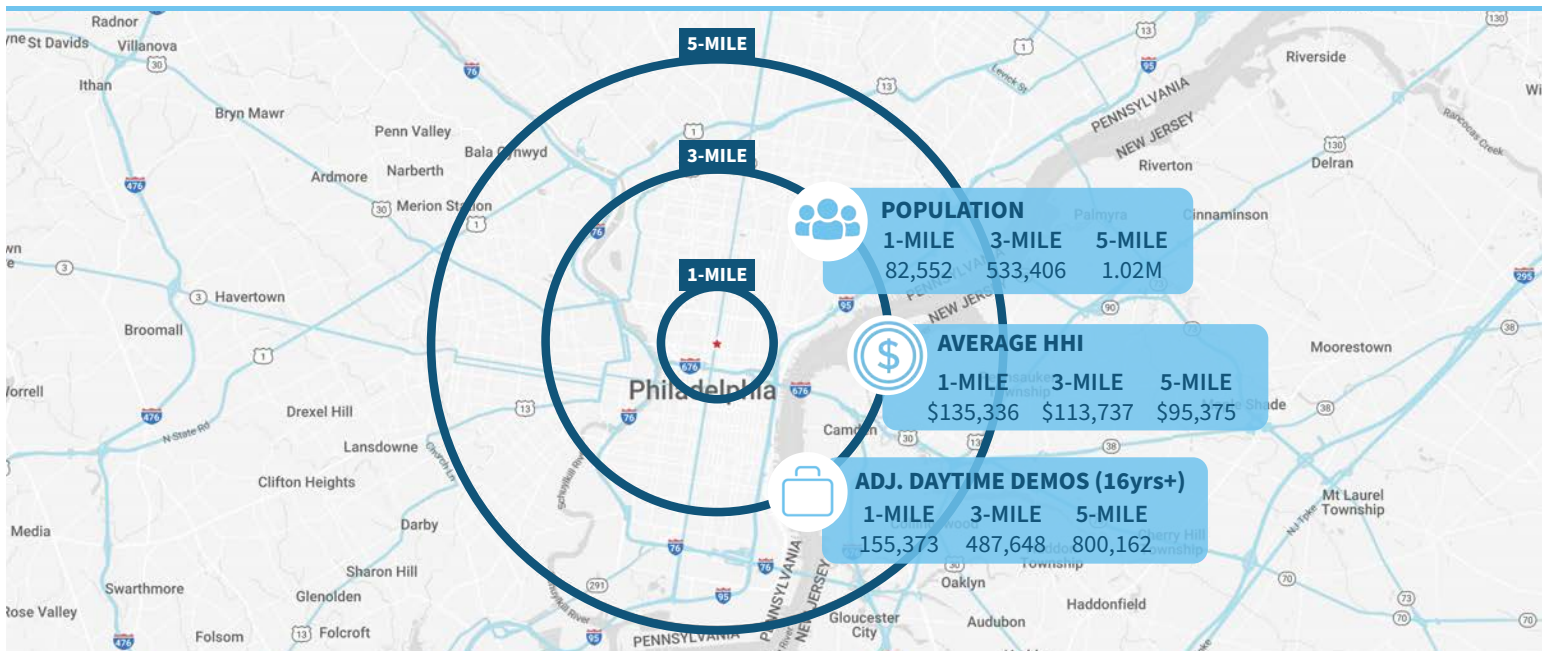


FOR LEASE: 3,200 SF GROUND FLOOR RETAIL SPACES

619 N Broad St, Philadelphia, PA 19128



Demographic Overview (1, 3, 5-mile radius)



The right space. The right move.

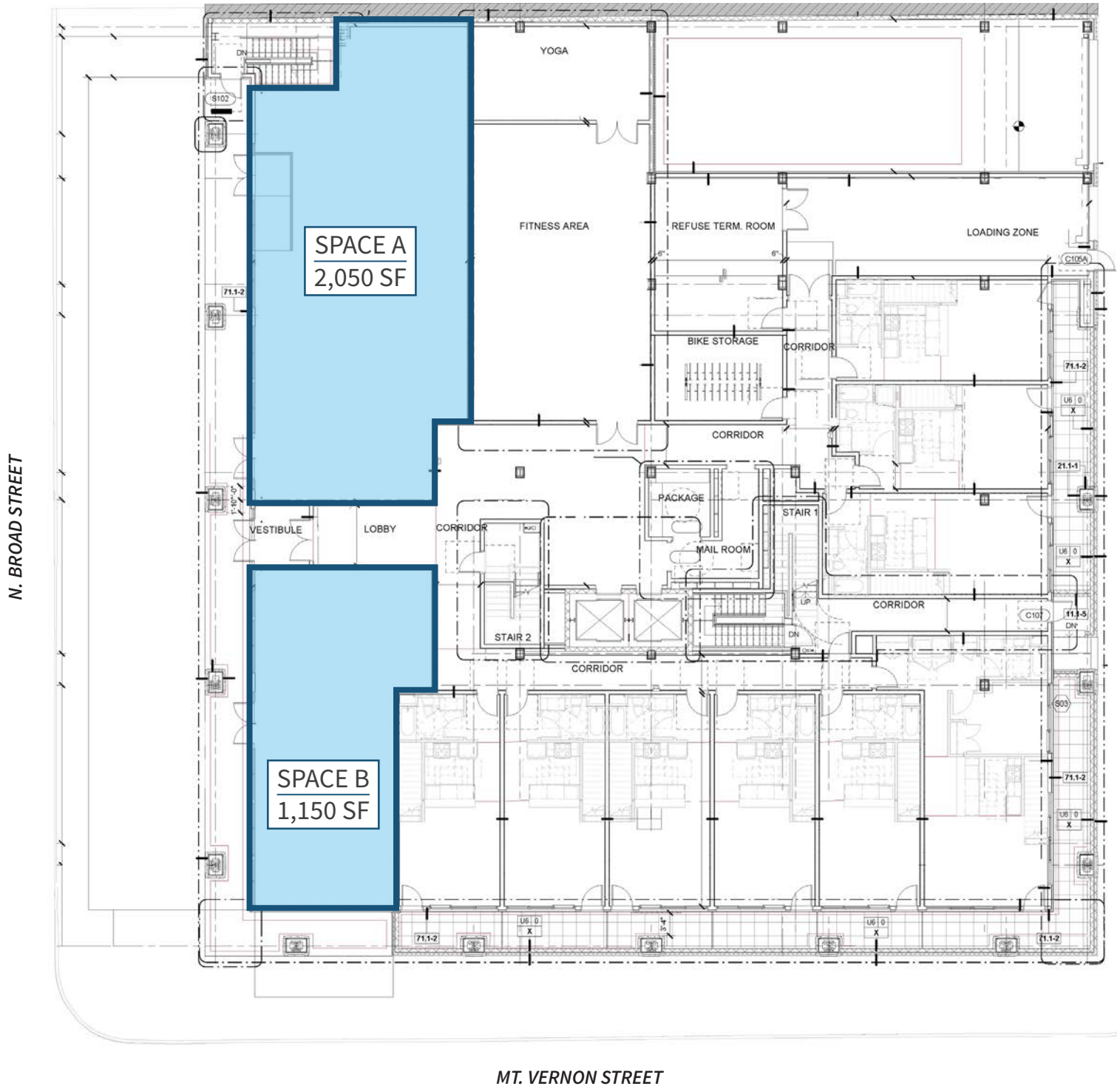


Information concerning this offering is from sources deemed reliable but no warranty is made to the accuracy thereof and it is submitted subject to errors, omissions, changes of price or other conditions, prior to sale or lease or withdrawal without notice. Equity CRE is licensed in PA, NJ, & DE. Nathan Rhodes, Steve Jefferies, and Will Ciccarelli are licensed salespersons in PA.

FOR LEASE: 3,200 SF GROUND FLOOR RETAIL SPACES

619 N Broad St, Philadelphia, PA 19128

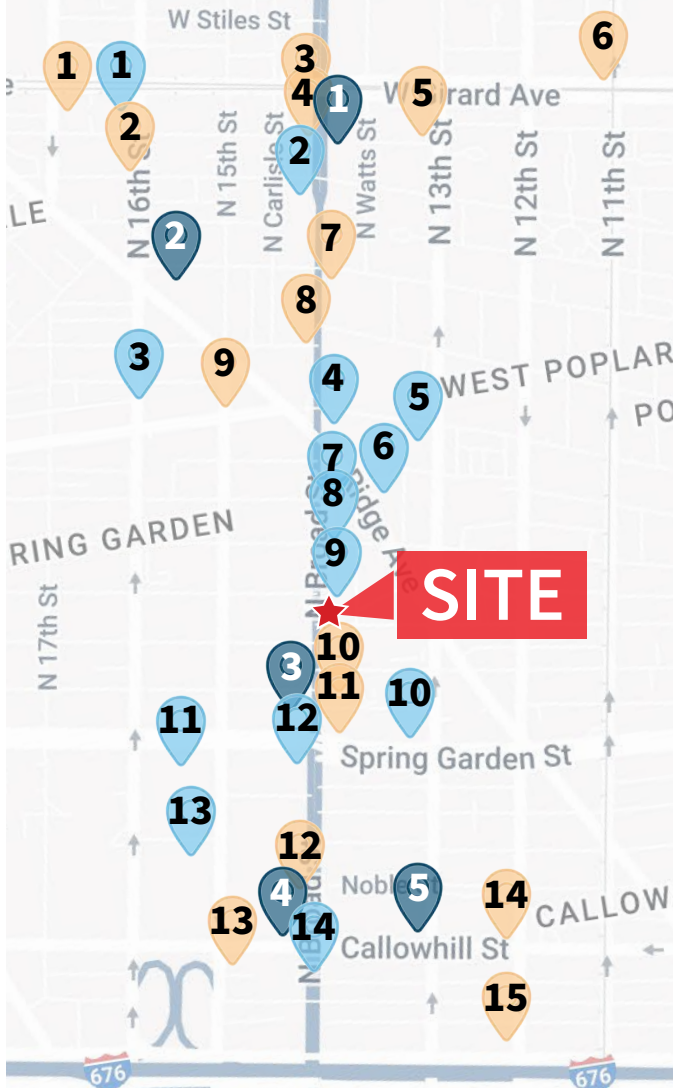
SITE PLAN



FOR LEASE: 3,200 SF GROUND FLOOR RETAIL SPACES

619 N Broad St, Philadelphia, PA 19128

N Broad St Developments



Completed

1	The Civic 1600-50 W Girard Ave	33,000 SF Retail 88 Units
2	The Met 858 N Broad St	Entertainment Venue
3	The HQ 710 N 16th St	35,000 SF 30 Units
4	Divine Lorrain 699 N Broad St	7,000 SF Retail 101 Units
5	1300 Fairmount Ave	25,000 SF Retail 478 Units
6	Venture Commons 1357 Ridge Ave	±3,000 SF Retail 50 Units
7	Studebaker 667 N Broad St	±43,000 SF Retail 20 Units
8	655 N Broad St	18 Units
9	Stable Lofts 631 N Broad St	4,500 SF Retail 41 Units
10	Mural Lofts 523 N Broad St	56 Units
11	1500 Spring Garden St	1 Million SF Office Building
12	Tower Place 490 N Broad St	Retail Plaza
13	1520 Hamilton St	576 Units
14	Hanover 322 & 339 N Broad St	14,000 SF Retail 449 Units

Proposed

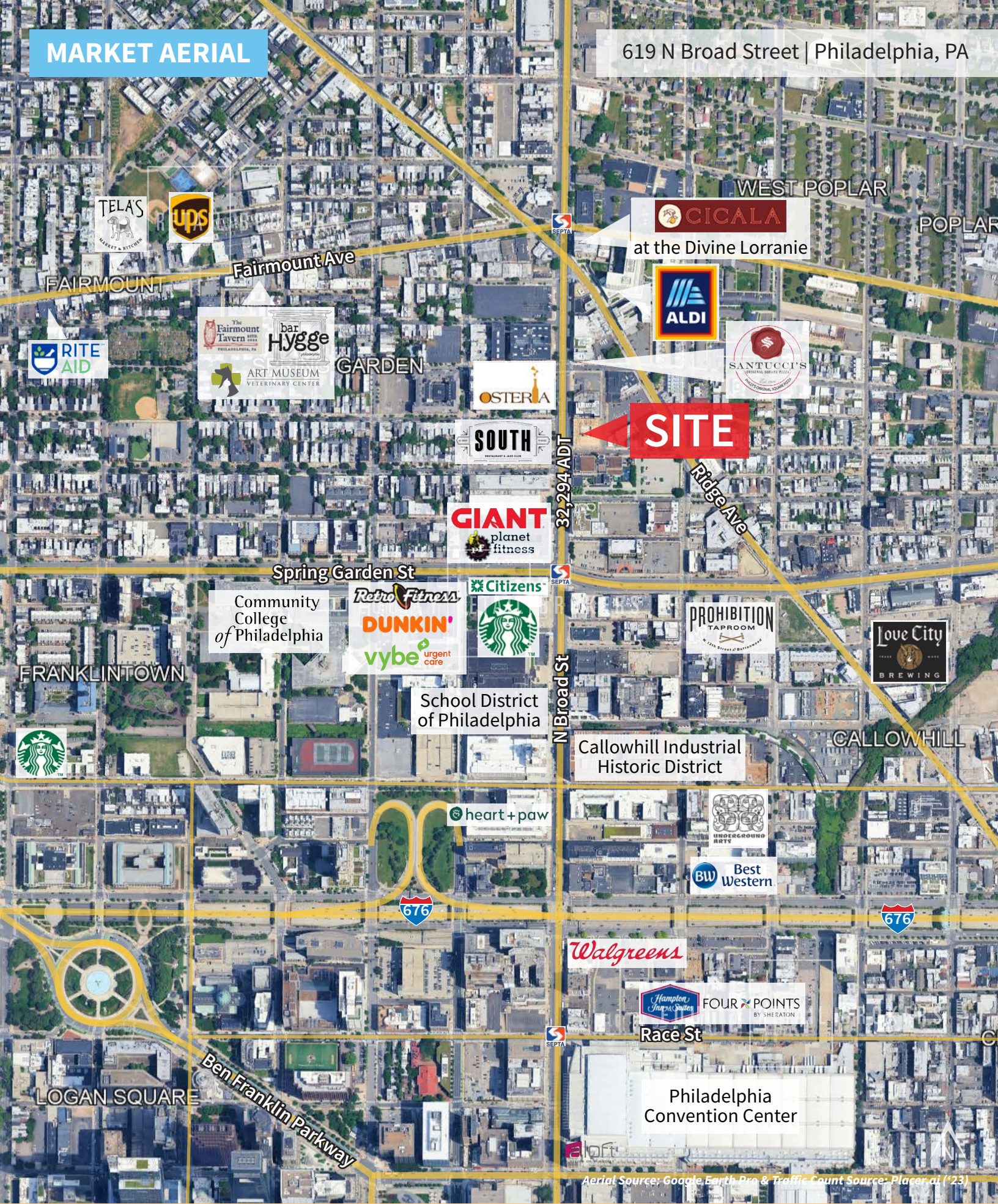
1	The Civic II 1600-50 W Girard Ave	10,000 SF Retail 202 Units
2	1609 Poplar St	21 Units
3	922 N Broad St	201 Units
4	906 N Broad St	94 Units
5	1309-25 Cambridge St	46 Units
6	1201 W Girard Ave	166 Units
7	813-823 N Broad St	63 Units
8	800 N Broad St	New Development
9	1501 Fairmount Ave	20,000 SF 20 Units
10	545 N Broad St	10,000 SF Retail 108 Units
11	Mural West 500 N Broad St	290 Units
12	North & Noble Sts	10,000 SF Retail 344 Units
13	1428 Callowhill St	162 Units
14	1201 Callowhill St	2,000 SF Retail 140 Units
15	1201-15 Vine St	120 Units

Under Construction

1	915-923 N Broad St	6,000 SF Retail 15,000 SF Office 70 Units
2	The Maven 1533 Ridge Ave	23,000 SF 28 Units Ground Floor Retail
3	LVL North 510 N Broad St	±110,000 SF Retail 410 Units
4	Inquire Building 400 N Broad St	Philadelphia Police Department Headquarters
5	The Hannah 1306 Callowhill St	±3,000 SF Retail 181 Units

MARKET AERIAL

619 N Broad Street | Philadelphia, PA



CICALA
at the Divine Lorraine



SITE

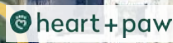


Community College of Philadelphia



School District of Philadelphia

Callowhill Industrial Historic District



Race St

Philadelphia Convention Center

Aerial Source: Google Earth Pro & Traffic Count Source: Placer.ai ('23)